



**Our Plan for
Working
With the Public
(PPIE)
2026
Easy Read Version**

NIHR King's Clinical Research Facility
(CRF)
King's College Hospital

NIHR | Clinical Research
Facility

About Us



We are at King's College Hospital in London.



We help run research studies.



Research studies can help create new treatments and medicines that can improve people's health.

What is PPIE ?

PPIE means Patient and Public Involvement and Engagement.



Patients and the public tell us what they think about our research.

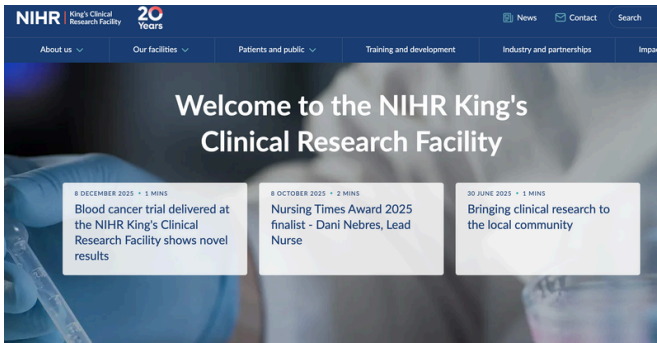


We work together to improve research.



This plan shows how we will work with patients and the public in 2026.

Goal 1: Tell People About Our Work



We will work with our public members on our website and social media.



We will write about how our public members helped with research.



We will go to health events to promote our patient involvement work.



We will send a newsletter 2 times a year.

Goal 2: Give public members a good experience



We will have a group of public members. This group meets every 3 months.



We will ask what training people need to take part in PPIE.

We will train all staff about Patient involvement.



We will ask members what they are interested in, so we can match them to the right opportunities.

Goal 3: Work with young people

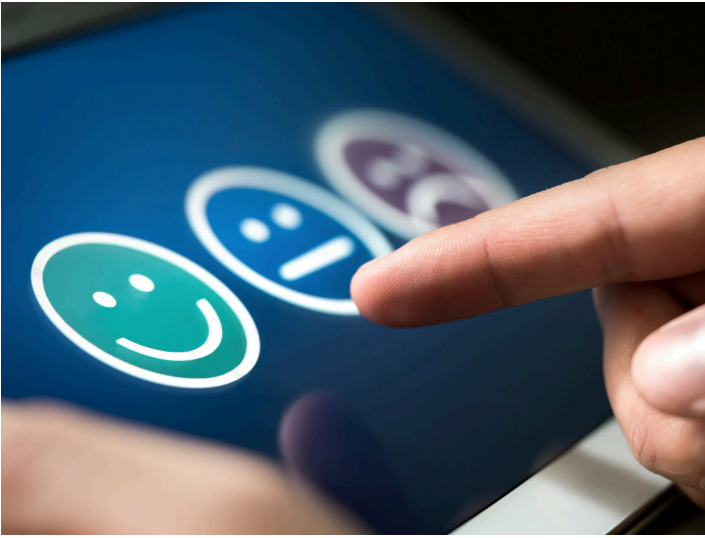


We will offer work experience and run open days for students.

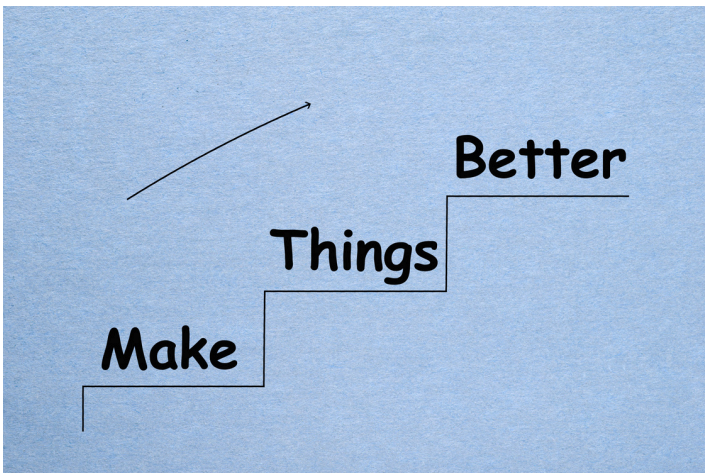


We will run workshops in local schools.

Goal 4: Check how well we are doing



We will ask people what they think when they visit us and after events.



At the end of the year, we will ask public members what we can do better.



We will keep a record of how members have helped our research.

How we make decisions together



We talk about PPIE in manager meetings, with 2 public members attending.



Some staff are PPIE champions. This means they help support public involvement and share information with others.

Payment



We pay public members for their time and contribution.

You will be paid £27.50 per hour.



We will pay your travel costs.

Get involved



Email: kch-tr.kingscrfppi@nhs.net



Website: kingscrf.nihr.ac.uk